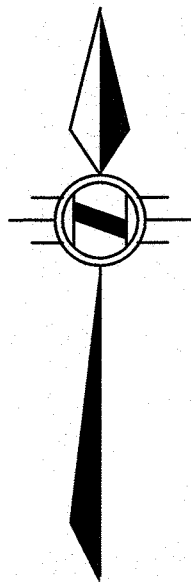


TOPOGRAPHIC SURVEY
OF
LOTS 1, 2 AND 3
REGISTERED PLAN 904
AND OF
LOT 20
REGISTRAR'S COMPILED PLAN 1475
IN THE
CITY OF HAMILTON

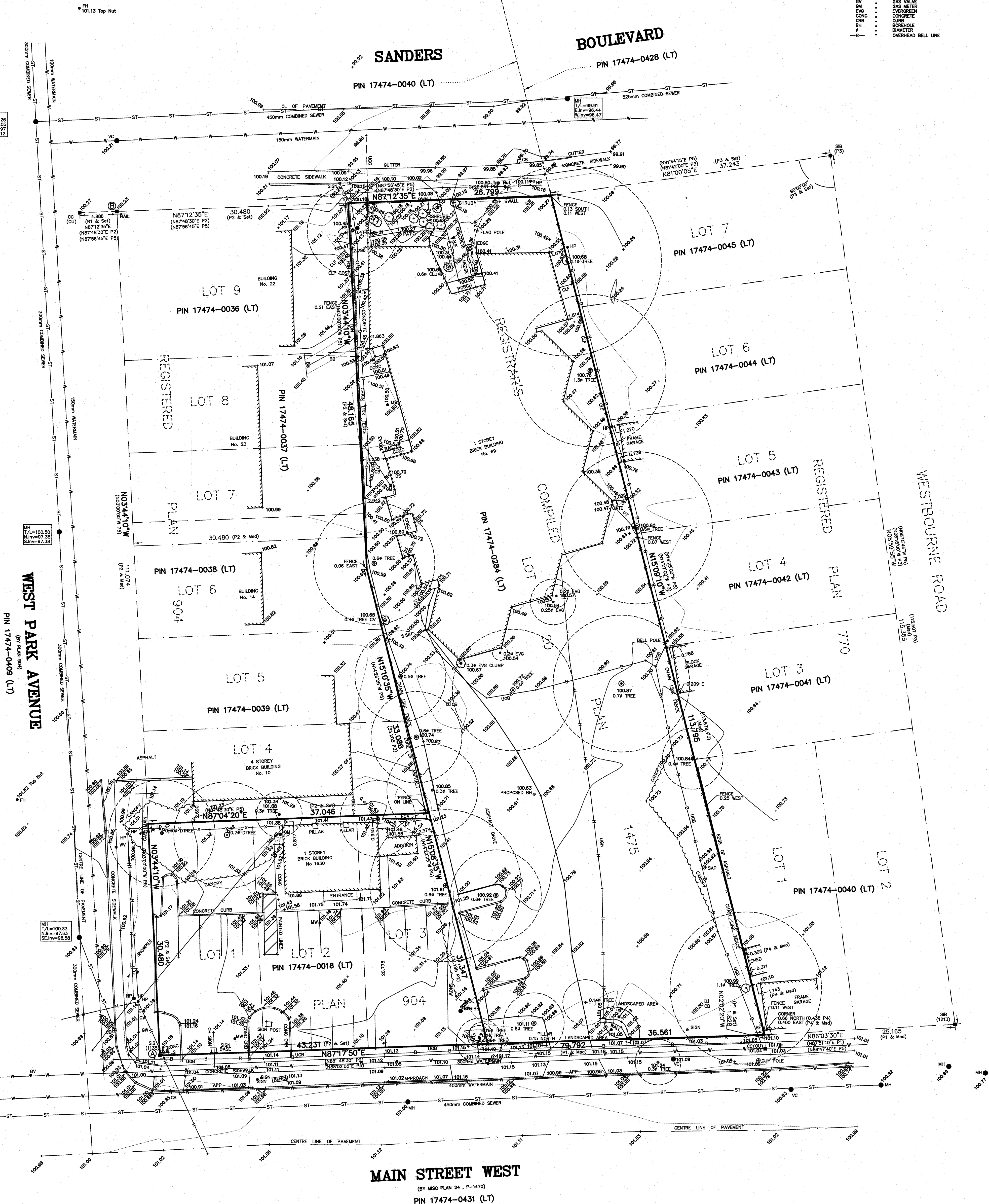
SCALE 1:250 METRIC

S.D. McLAREN, O.L.S. - 2018



LEGEND:

- DENOTES MONUMENT SET
- IB MONUMENT FOUND
- CC IRON BAR
- CB CUT CROSS
- SB STANDARD IRON BAR
- SEA A. T. McLAREN, O.L.S.
- 1135 I.C. WOODS, O.L.S.
- 1213 J.D. PETERS, O.L.S.
- OU ORIGIN UNKNOWN
- Med MEASURED
- ST PLAN 828-868
- P2 REGISTERED PLAN 804
- P3 REGISTERED PLAN 770
- P4 PLAN BY S.M. WOODS, O.L.S.
- P5 PLAN BY A.T. McLAREN, O.L.S.
- N1 FILE A-300, DATED SEPT. 10, 1953
- N2 FILE A-300, DATED SEPT. 10, 1953
- N3 FILE 34245, DATED MARCH 12, 2014
- N4 NOTES BY A.T. McLAREN, O.L.S.
- N5 FILE E-9186, DATED FEB. 20, 1989
- CL CENTRELINE
- CH MANHOLE
- VC VALVE CHAMBER
- CB CATCH BASIN
- INW INVERT
- LS LIGHT STANDARD
- HYDRO HYDRO POLE
- GP GUY POLE
- SW SWAY
- FI FIRE HYDRANT
- TS TOP OF BANK
- BB BOTTOM OF BANK
- SO SOAK PIT
- GF GARAGE FLOOR
- UHI UNDERGROUND HYDRO
- UBS UNDERGROUND BELL
- UCC UNDERGROUND CABLE
- APP APPROACH
- OV OVERHANG
- PF PLASTIC FENCE
- BF BOARD FENCE
- CLF CHAIN LINK FENCE
- FP FLAG POLE
- SMW BLOCK WALL
- GV GAS VALVE
- GM GAS METER
- EVG EVERGREEN
- CONC CONCRETE
- CRB CURB
- BS BENCHMARK
- D DIAMETER
- OB OVERHEAD BELL LINE



BEARING NOTE:
 BEARINGS ARE UTM GRID, DERIVED FROM OBSERVED REFERENCE POINTS A AND B, BY REAL TIME NETWORK OBSERVATIONS, UTM ZONE 17, NAD83 (CSRS) (2010.0)

NOTE:
 DISTANCES ARE GROUND AND CAN BE CONVERTED TO GRID BY MULTIPLYING BY THE COMBINED SCALE FACTOR OF 0.99968222

INTEGRATION DATA

POINT ID	NORTHING	EASTING
CRP A	478984.454	586721.633
CRP B	4790075.226	586714.404

COORDINATES CANNOT, IN THEMSELVES, BE USED TO RE-ESTABLISH CORNERS OR BOUNDARIES SHOWN ON THIS PLAN.

METRIC NOTE
 DISTANCES SHOWN ON THIS PLAN ARE IN METRES AND CAN BE CONVERTED TO FEET BY DIVIDING BY 0.3048

SURVEYOR'S CERTIFICATE:
 I CERTIFY THAT:
 1. THIS SURVEY AND PLAN ARE CORRECT AND IN ACCORDANCE WITH THE SURVEY ACT, THE SURVEYORS ACT AND THE REGULATIONS MADE UNDER THEM
 2. THE SURVEY WAS COMPLETED ON THE 12th DAY OF MARCH, 2018

MARCH 16, 2018
 DATE S. DAN McLAREN, O.L.S.

S.D. McLAREN, O.L.S. - 2018. NO PERSON MAY COPY, REPRODUCE, DISTRIBUTE OR ALTER THIS PLAN IN WHOLE OR IN PART WITHOUT THE WRITTEN PERMISSION OF S.D. McLAREN, O.L.S.

A.T. McLaren Limited
 LEGAL AND ENGINEERING SURVEYS
 69 JOHN STREET SOUTH, SUITE 230
 HAMILTON, ONTARIO, L8N 2B9
 PHONE (905) 527-8559 FAX (905) 527-0032

Drawn: RM Checked: RBM
 Date: 1:250 Scale
 Dwg No: 35693-T

BENCHMARK:
 MONUMENT 1-19
 Canadian Martyrs Separate School, on south side of Main Street, 75 m west of Emerson Street, tablet in east concrete foundation wall, 3.8 m from south/east corner, 0.15 m below stone siding, 5.2 m south of side entrance, at road level. No. 65-U-033
 Elevation 100.149 m ADJUSTED

NOTE:
 UNDERGROUND SERVICE AND UTILITY LOCATIONS WERE DERIVED FROM REGIONAL MUNICIPALITY OF HAMILTON DRAWING 89-H-67 (SHEET 1 OF 1) AND DRAWING 90-H-5 (SHEET 2 OF 2)
 UNDERGROUND SERVICE AND UTILITY LOCATIONS MUST BE VERIFIED PRIOR TO CONSTRUCTION
 INVERTS MUST BE VERIFIED PRIOR TO CONSTRUCTION